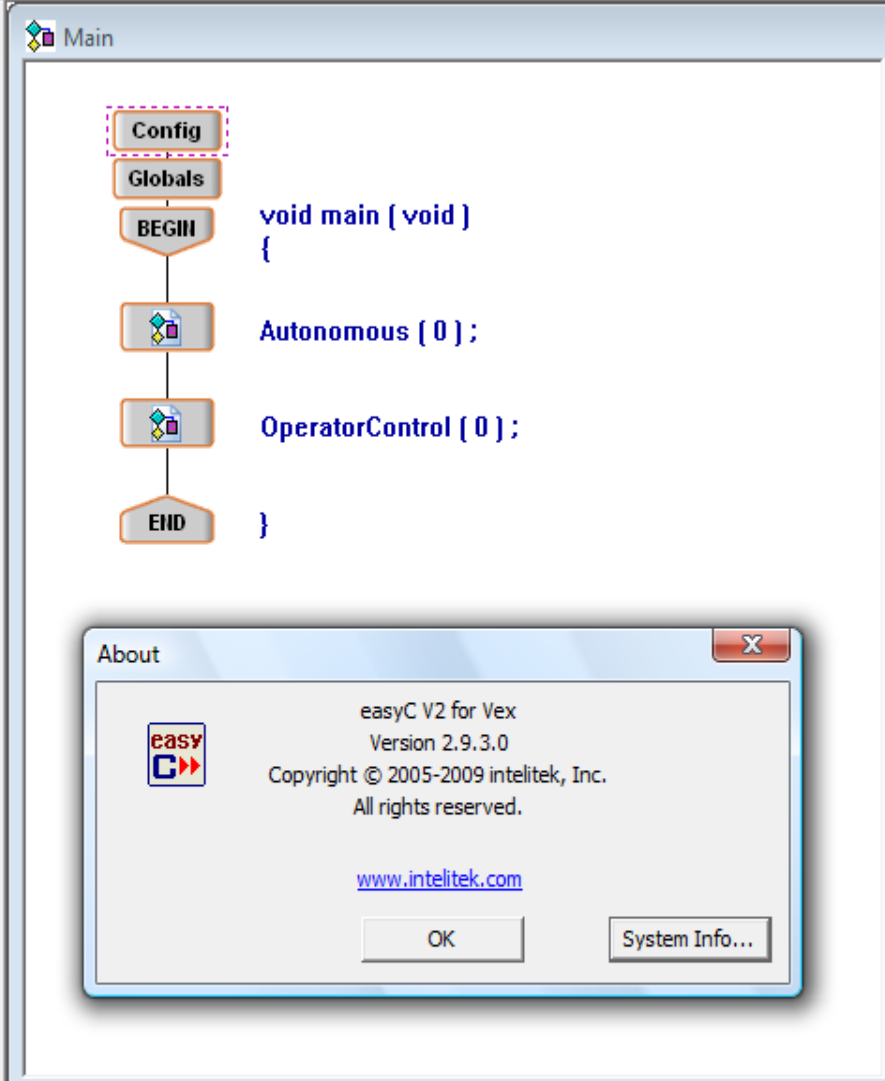


How to get to Autonomous Operator Control and see print statements in Terminal Window

Marc Center October 17, 2009

- ◆ If
 - ◆ Else - If
 - ◆ Else
 - ◆ Switch
 - ◆ Case
 - ◆ Default
 - ◆ While Loop
 - ◆ For Loop
 - ◆ Timer
 - ◆ Wait
 - ◆ Assignment
 - ◆ Break
 - ◆ Continue
 - ◆ Return
 - ◆ Print To Screen
 - ◆ Comment
 - ◆ User Code
 - ◆ RC Control
 - ◆ Arcade - 2 motor
 - ◆ Arcade - 4 motor
 - ◆ Tank - 2 motor
 - ◆ Tank - 4 motor
 - ◆ Motor Module Rx
 - ◆ Servo Module Rx
 - ◆ Rx Input
 - ◆ User Functions
 - ◆ Autonomous
 - ◆ OperatorControl
- Function Blocks Project



```

1 #include "Main.h"
2
3 void main ( void )
4 {
5     Autonomous ( 0 ) ;
6     OperatorControl ( 0 ) ;
7 }
    
```

About

easyC V2 for Vex
Version 2.9.3.0
Copyright © 2005-2009 intelitek, Inc.
All rights reserved.

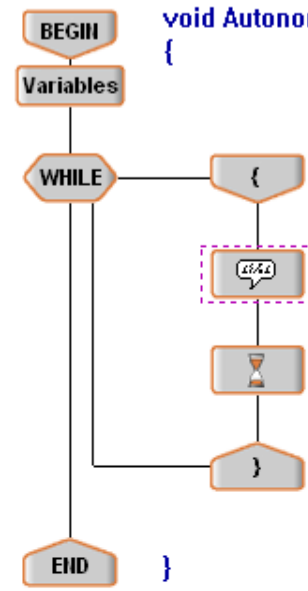
www.intelitek.com

OK System Info...

- ◆ If
- ◆ Else - If
- ◆ Else
- ◆ Switch
- ◆ Case
- ◆ Default
- ◆ While Loop
- ◆ For Loop
- ◆ Timer
- ◆ Wait
- ◆ Assignment
- ◆ Break
- ◆ Continue
- ◆ Return
- ◆ Print To Screen
- ◆ Comment
- ◆ User Code
- ◆ RC Control
 - ◆ Arcade - 2 motor
 - ◆ Arcade - 4 motor
 - ◆ Tank - 2 motor
 - ◆ Tank - 4 motor
 - ◆ Motor Module Rx
 - ◆ Servo Module Rx
 - ◆ Rx Input
- ◆ User Functions
 - ◆ Autonomous
 - ◆ OperatorControl

Function Blocks Project

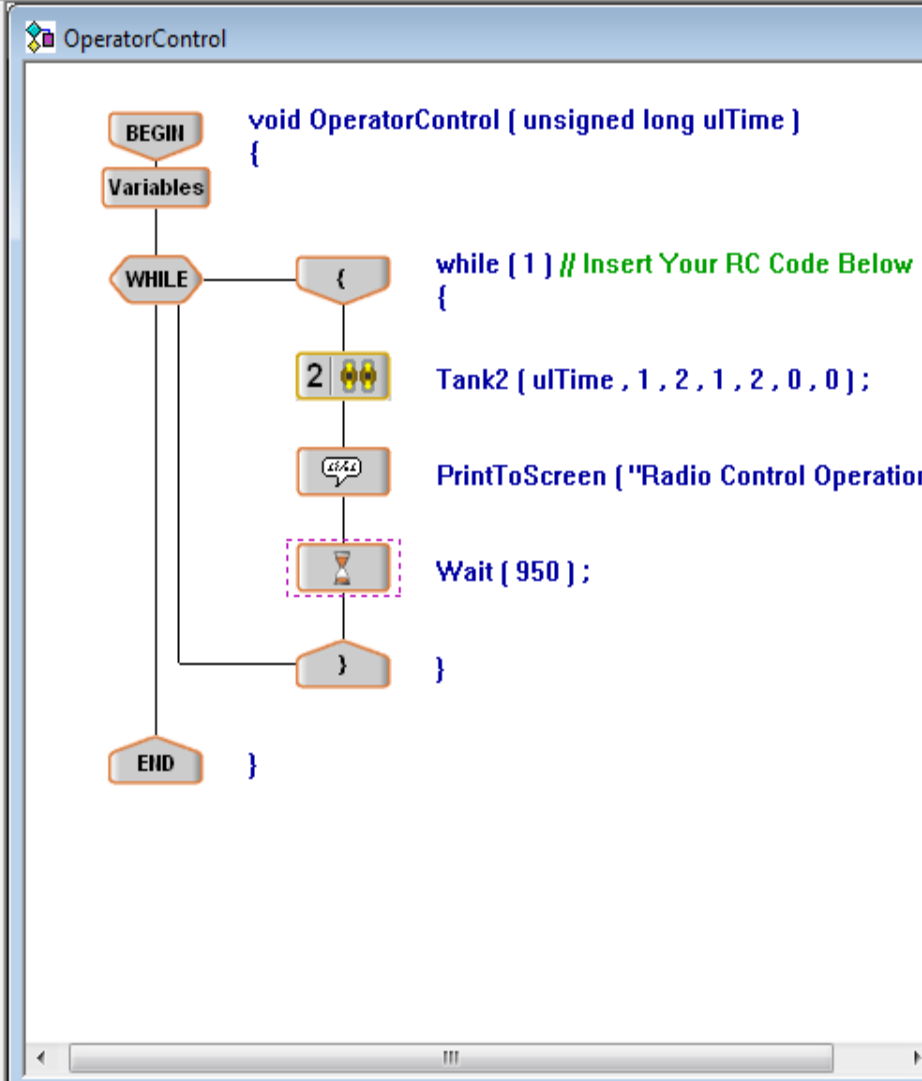
Autonomous



```
void Autonomous ( unsigned long ulTime )  
{  
  Variables  
  WHILE {  
    PrintToScreen ( "Autonomous Operation\n" )  
    Wait ( 980 );  
  }  
  END }  
}
```

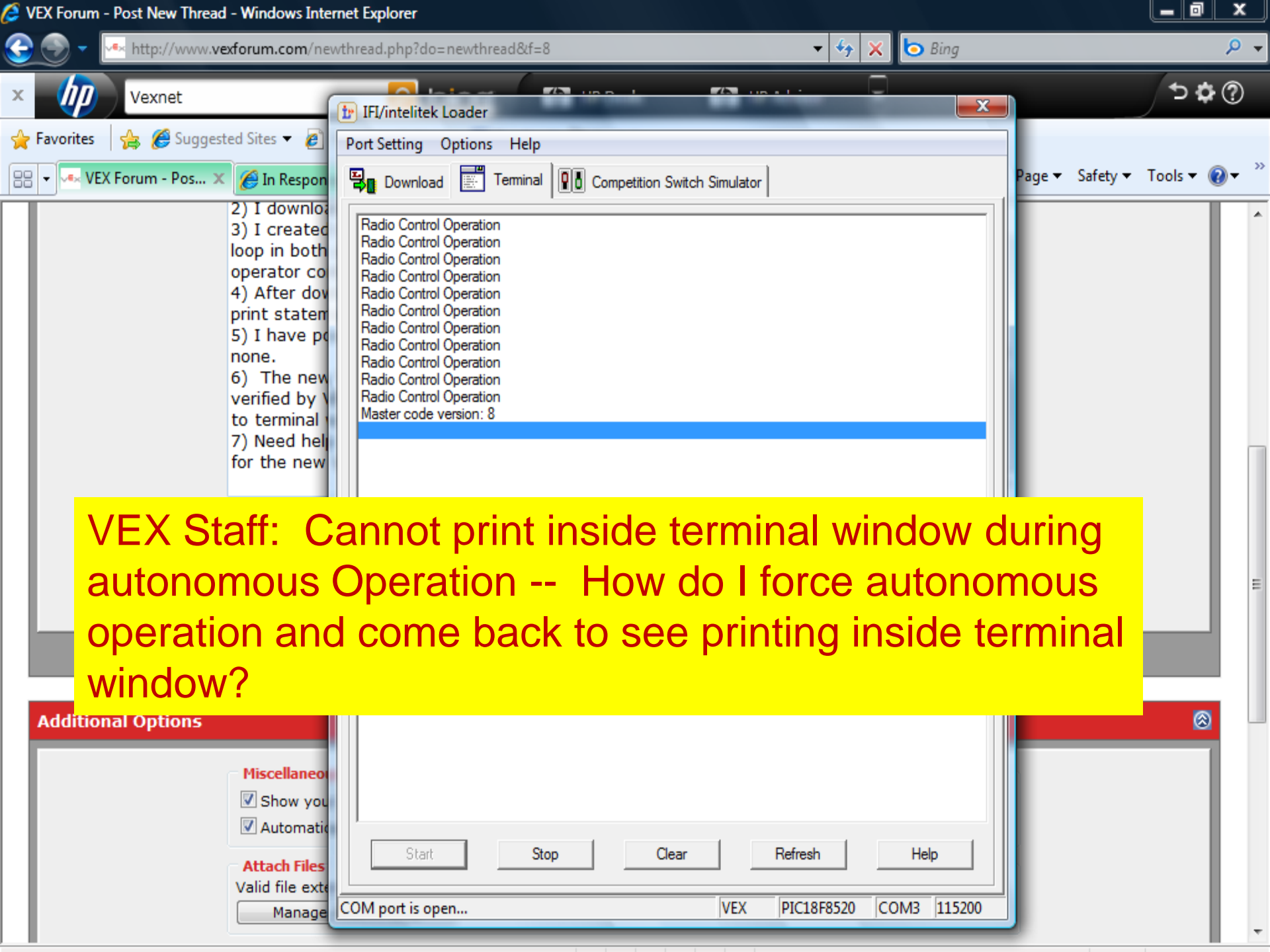
```
1 #include "Main.h"  
2  
3 void Autonomous ( unsigned long ulTime )  
4 {  
5   while ( 1 )  
6   {  
7     PrintToScreen ( "Autonomous Opera  
8     Wait ( 980 );  
9   }  
10 }
```

- ◆ If
- ◆ Else - If
- ◆ Else
- ◆ Switch
- ◆ Case
- ◆ Default
- ◆ While Loop
- ◆ For Loop
- ◆ Timer
- ◆ Wait
- ◆ Assignment
- ◆ Break
- ◆ Continue
- ◆ Return
- ◆ Print To Screen
- ◆ Comment
- ◆ User Code
- ◆ RC Control
 - ◆ Arcade - 2 motor
 - ◆ Arcade - 4 motor
 - ◆ Tank - 2 motor
 - ◆ Tank - 4 motor
 - ◆ Motor Module Rx
 - ◆ Servo Module Rx
 - ◆ Rx Input
- ◆ User Functions
 - ◆ Autonomous
 - ◆ OperatorControl



```

1 #include "Main.h"
2
3 void OperatorControl ( unsigned long ulTime )
4 {
5     while ( 1 ) // Insert Your RC Code Below
6     {
7         Tank2 ( ulTime , 1 , 2 , 1 , 2 , 0 , 0 );
8         PrintToScreen ( "Radio Control Operati
9         Wait ( 950 );
10    }
11 }
    
```



VEX Staff: Cannot print inside terminal window during autonomous Operation -- How do I force autonomous operation and come back to see printing inside terminal window?

2) I downlo
3) I created
loop in both
operator co
4) After dov
print statem
5) I have po
none.
6) The new
verified by V
to terminal
7) Need help
for the new

Post Icons


You may cho

 No icon

IFI/intelitek Loader

Port Setting Options Help

Download Terminal Competition Switch Simulator



ENABLE DRIVER
DISABLE AUTONOMOUS

Reset

Help

8520 COM3 115200

VEX Staff: Cannot go from this Menu (autonomous) back to terminal window to see printing without resetting Autonomous operation.